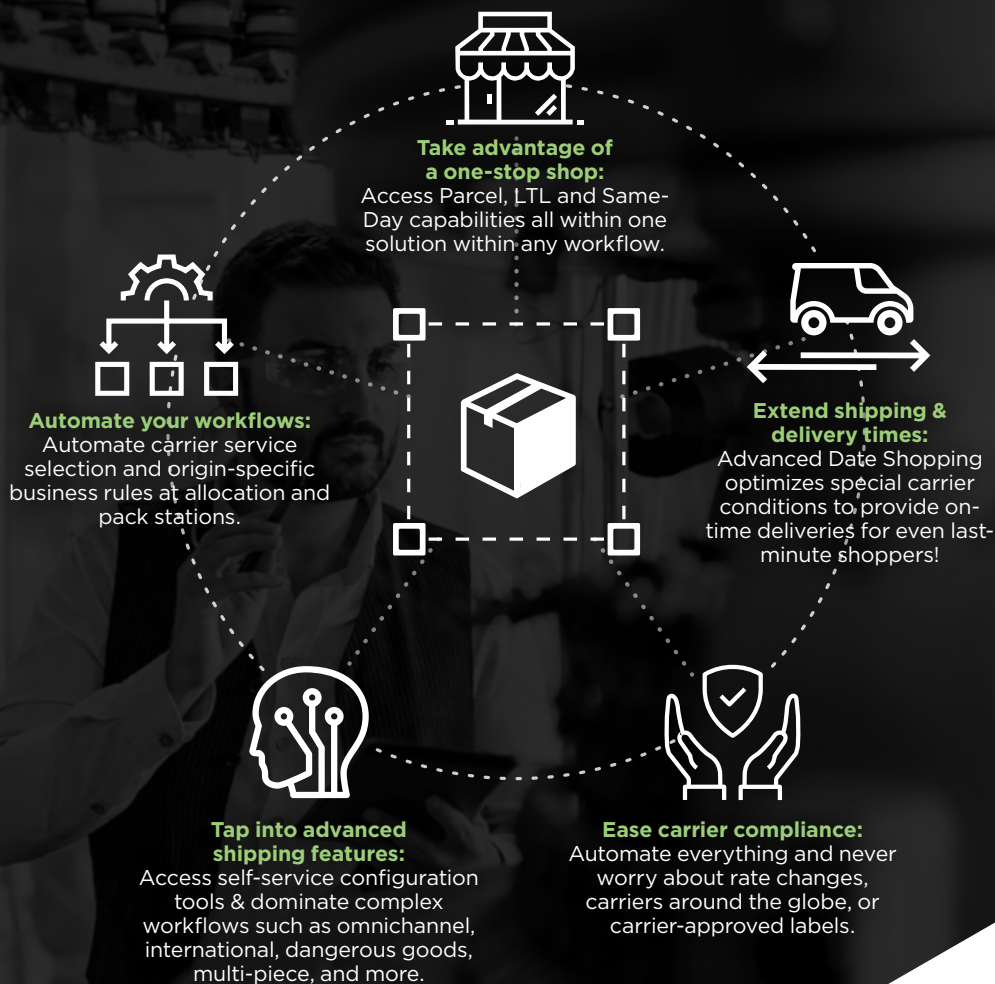
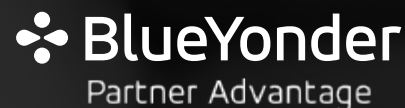


BLUE YONDER + PROSHIP

Ease supply chain complexities with feature-rich shipping technology.



BRANDS THAT WIN
WITH BLUE YONDER
AND PROSHIP

ABB

BAUSCH+Health

GNC
LIVE WELL



GXO

HORIZON
H O B B Y

ide

Johnson
Controls

KENCO

McKesson
Empowering Healthcare



School
Specialty

SEPHORA West Marine

“The addition of ProShip will provide us a more robust solution offering elevated levels of distribution efficiency, carrier integrations and quality support — helping us exceed customer expectations.”

— Ryan Ostrom, Chief Brand Officer, GNC

Enabling faster and more cost-effective shipping experiences.

ProShip's experience with Blue Yonder Supply Chain Execution (WMS), Blue Yonder Luminate Omnichannel Commerce (OMS, Ship-from-Store), and support for legacy platform connectivity (JDA, RedPrairie), allows our team to maximize your end-of-line shipping capabilities and eliminate skyrocketing shipping costs, while increasing profitability and visibility.

How Blue Yonder customers win with ProShip.

Access proven integrations & expertise. Blue Yonder's Parcel Handling Integrator (PHI), as well as Open Sky Group's standard integrations minimize WMS and OMS modifications when connecting to the ProShip platform.

Handle the complexities of advanced shipping with ease. Beyond seamless connectivity with Blue Yonder platforms, ProShip assists users in tapping into advanced features, such as carrier volume balancing, advanced date shopping (ADS), and more, and functions to continuously improve your supply chain.

Stay up-to-date and fully compliant. Continuously stay compliant with your carrier partners and add value to your supply chain with ProShip's automated update process and versionless Continuous Integration/Continuous Deployment (CI/CD) process.

“Blue Yonder's partners play an important role in ensuring we offer the best solutions to our customers. ProShip's strengths, such as rate shopping, the creation of carrier-compliant labels, speed of shipment execution, and its ability to manage dangerous and hazardous goods as part of the shipping process, hit the target for what many customers were looking for. ProShip's capabilities complement our own software solution set extremely well.”

— Buck Devashish, Corporate Vice President, Global Partners Strategy and Alliances, Blue Yonder

Seamlessly integrate your Blue Yonder and ProShip solutions into your entire enterprise technology stack.

As the supply chain's digital transformation continues, today's companies require a fully integrated enterprise technology stack that provides seamless shipping visibility across the entire supply chain architecture. The integration tools that ProShip provides allow for easy integration into the various pieces of your technology stack.

Investing in better shipping pays back BIG.

43%
GENERATE
MORE REVENUE BY
EXPANDING SHIPPING
CHOICES

6-7%
SAVINGS
IS THE INDUSTRY
AVERAGE FREIGHT
SPEND SAVINGS WHEN
USING RATE SHOPPING

1-2
DAYS
INCREASE
DELIVERY SPEED TO
CUSTOMER THROUGH
CARRIER DIVERSIFICATION



[ProShipinc.com](https://proshipinc.com)

Learn more **800.353.7774**
or sales@proshipinc.com